

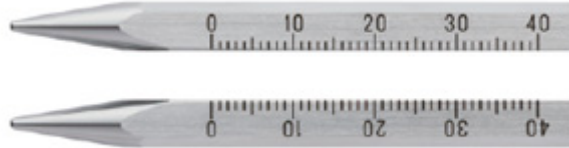


EB-3B

Ear Bars for Mice (in a pair)

Ear bars for mice specific to the SR series.

Ear bars for mice are used with the SR series stereotaxic instruments.



Specification

Dimensions/Weight	
	L70mm, 36g (per pair)

Specifications are subject to change without notice.

Copyright © NARISHIGE Group. All Rights Reserved. 1999-2018