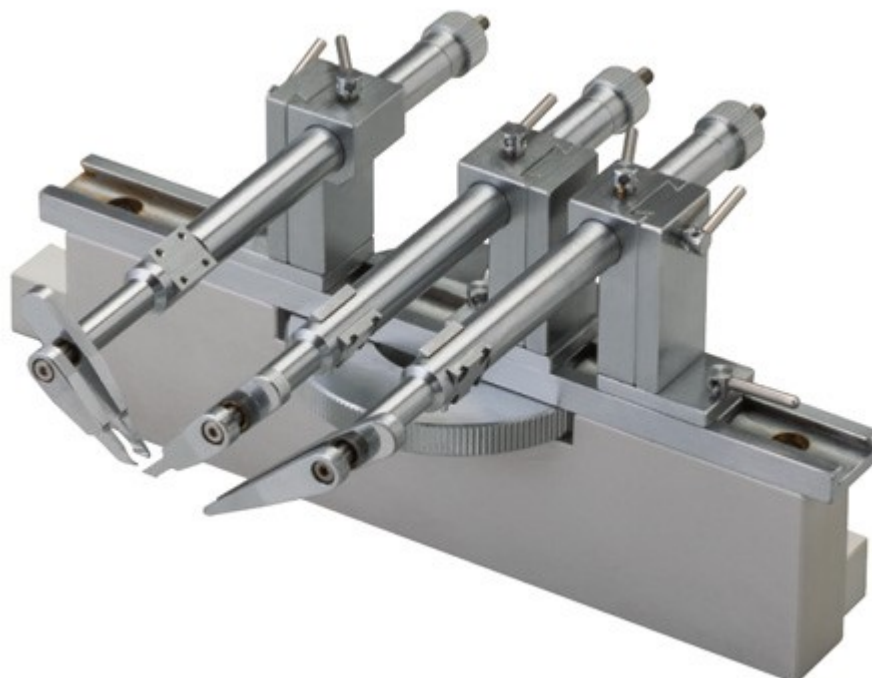


STS-A

Compact Spinal Cord Clamps (for Mice/Newborn Rats)

Spinal cord clamps for mice or newborn rats.

The STS-A compact spinal cord clamps is used in conjunction with the SR series stereotaxic instrument with a AP frame bar. To ensure that the fragile spinal cord of a mouse or a newborn rat is clamped securely and correctly, this model is designed so that the clamp feeling is communicated to the operator's hand.



Specification

Accessories included	Connecting rings Screws Hex Wrench
Dimensions/Weight	W170 × D115 × H82 ~ 112mm, 860g

Specifications are subject to change without notice.

Copyright © NARISHIGE Group. All Rights Reserved. 1999-2019