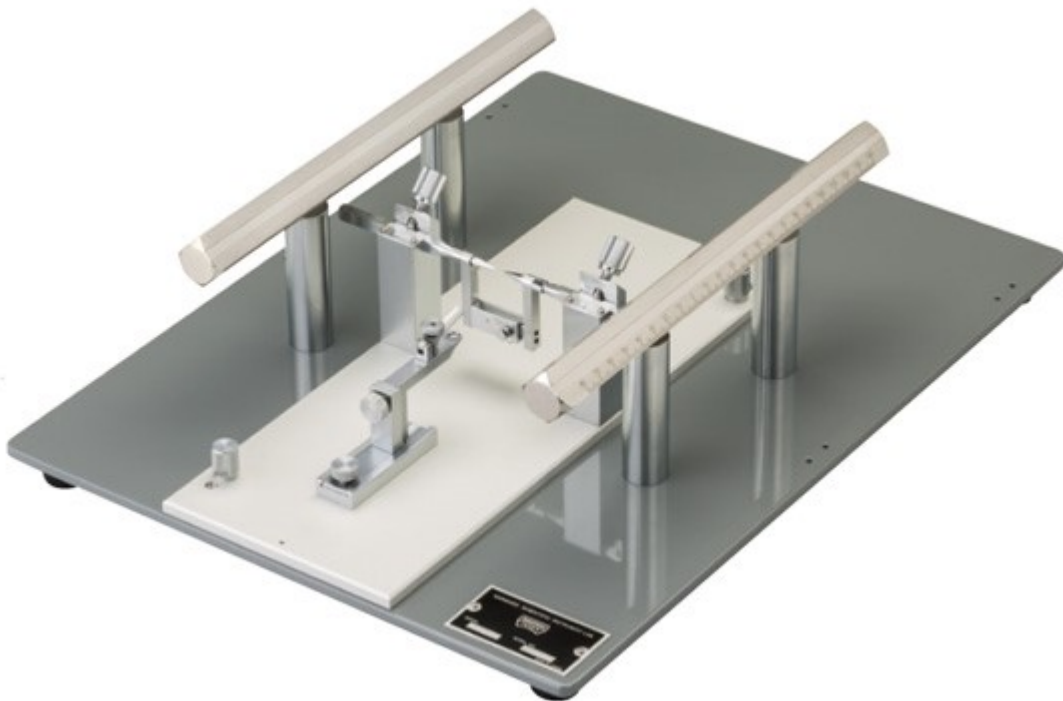


SR-6M-HT

Stereotaxic Instruments (for Mice)

Specially designed for mice, fixing the head firmly.

Based on our long-established SR series, this stereotaxic instrument is designed specifically for mice and is equipped with various functions to fix the head more firmly. The auxiliary ear bar allows clamping actions to be smoothly manipulated with just one hand, letting the operator fix the external auditory canal and check the fixation firmness with the fingertips. The mouth and nose fixing clamp features a slim, compact design appropriate for the mouth of a small mouse, making it easy to confirm that the teeth are fixed firmly. In addition, the instrument allows easy back/forward and up/down position adjustment. An AP frame bar is provided, to which many different types of accessories can be attached along with the attached micromanipulator. The SR-5M has one AP frame bar, while the SR-6M has two.



* When using these instruments with rats, [RA-6N](#) is required separately.

* When using these instruments with common marmosets, use the separate [CA-6](#) as well.

SR-6M-HT

Stereotaxic Instruments (for Mice)

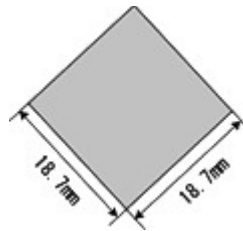
Setting Example



* Stereotaxic micromanipulators such as SM-15R is sold separately.

AP frame bar size

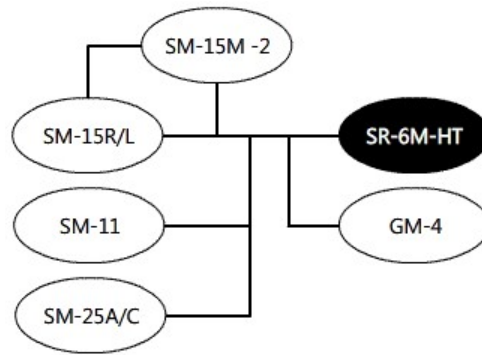
Narishige produces world standard 18.7mm square shape AP frame bar. Please be advised when mounting on your existent frames since our stereotaxic manipulators are tailored for 18.7mm AP frame bar.



Specification

Accessories included	<u>EB-3B</u> Ear Bars for Mice (in a pair) <u>EB-5N</u> Auxiliary Ear Bar for Mice
Dimensions (Base plate)	W400 × D300 × H110mm
Total weight	9.2kg

System Diagram



- refers to the model itself with standard attachments
- refers to attachable main accessories
- refers to types of mounting adaptors

Specifications are subject to change without notice.

Copyright © NARISHIGE Group. All Rights Reserved. 1999-2019